


## Rolling Plains District 3 4-H Archery Games

February 10, 2025

**TO:** District 3 County Extension Agents

**FROM:**   
Seth Hall  
Extension Program Specialist 4-H

**SUBJECT:** 2025 ROLLING PLAINS DISTRICT 3 4-H ARCHERY GAMES

---

Enclosed you will find the 2025 District 3 4-H Archery Games Information

**Event Date:** Saturday, May 3, 2025  
Check-In at 8:00 AM (Each contestant must check in with waivers, bow, and arrows)  
Orientation: 8:45  
Start Time: 9:00 AM  
Awards to follow tabulation

**Questions or Accommodations:**  
Jerry Coplen, Knox County 940.459.2651  
Maranda Revell, Archer County 940.574.4914  
Justin Gilliam, Hardeman County 940.249.2748

**Location:** Archer County Youth Shooting Sports Complex  
1000 West South Street  
Archer City 76351  
Shooting Sports Complex is on the SW side of the lake.

**Registration:** Registration on 4-H Connect  
April 1<sup>st</sup> – 18<sup>th</sup> Registration entry fee is \$25.00 per youth.  
April 19<sup>th</sup> – 25<sup>th</sup> Late Registration, \$25.00 late fee + original \$25.00 entry fee. After this time, no more late registration will be accepted. You will NOT be able to register or pay the day of the contest for the District 4-H Contest.

**Lunch:** Archer County will serve as Host County. Please submit complete lunch reservation form to Archer County by April 29<sup>th</sup> - P.O. Box 580, Archer City, TX 76351  
Holliday 4-H will provide a limited concession stand

Mules, golf carts or similar motorized equipment will not be allowed on the ranges, except for those reserved for event staff mobility or pre-approved accommodations.

**Complete 3-D Archery Rules can be found at the end of the letter. They are sourced from the state 4-H rules. Please make yourself familiar with them prior to the contest.**

**Remember to bring a signed copy of the waiver with you on the day of the contest! A blank copy can be found at the end of this letter.**



# Rolling Plains District 3 4-H Archery Games

## Contest Rules & Guidelines

**Participation:** Participants must be 4-H members currently enrolled in a Texas 4-H & Youth and Development county program and actively participating in the Shooting Sports Project, under a Certified 4-H Archery Coach.

**Age Divisions:** Age divisions are determined by a participant’s age as of August 31, 2024 as follows:

<u>Division</u>	<u>Grades</u>
First Year Junior	8 years old and 3 <sup>rd</sup> -5 <sup>th</sup> grades & first year to participate in Archery Project (These are 4-H members that have just begun shooting with a certified 4-H archery coach since August 2024 AND have no competitive experience.)
Junior	8 years old and 3 <sup>rd</sup> , 4 <sup>th</sup> , and 5 <sup>th</sup> grades
Intermediate	6 <sup>th</sup> , 7 <sup>th</sup> , and 8 <sup>th</sup> grades
Senior	9 <sup>th</sup> , 10 <sup>th</sup> , 11 <sup>th</sup> , and 12 <sup>th</sup> grades

**Bow Classes:** Bow classifications will follow the currently published Texas 4-H Shooting Sports Indoor Archery Handbook. If you have a question about bow classifications, contact a match director. The maximum draw weight for 4-H target archery competitions is 60 pounds. Bows may be subject to verification at the discretion of event management. You must shoot the same bow for each match. (changing equipment is permitted in the event of equipment failure)

**Bare Bow (longbow or recurve):** Bows may not be equipped with sights or sighting marks. Mechanical release aids are not permitted. Kisser buttons are not permitted; cushion plungers are not permitted.

**Recurve:** Bows may be equipped with a single sighting device, single pin, multiple pin, or hunting style sights; may not be equipped with string peeps or string marks for rear sights. Laser or other holographic sights which paint a target will not be allowed. Mechanical release aids are not permitted.

**Compound Aided:** Bows may be equipped with magnified sights and stabilizers. Mechanical release aids are permitted. Laser or other holographic sights which paint a target will not be allowed.

**Compound Unaided:** Bows may not be equipped with magnified sights or stabilizers. Bows may be equipped with fixed single pin or multiple pin sights. No Peep Sight. Mechanical release aids are not permitted. Kisser buttons and string peeps are not permitted.

**NASP:** This class is utilizing NASP equipment only - Genesis or mini Genesis bows “out of the box” with no sights, sighting marks or stabilizers. No Genesis Pro or Genesis Gen-X bows will be in this class. Mechanical release aids are not permitted. The white nock point may have been replaced with a brass, tied or similar nock point. Only Easton 1820 30" arrows are allowed in this class.



## Rolling Plains District 3 4-H Archery Games

Arrows may not exceed 23/64-inch diameter. A minimum of 6 arrows is recommended. A belt quiver or back quiver is required for safe carry.

Optics: Binoculars are allowed. Range finders or similar devices, including cell phone apps will not be permitted. Bow sites which incorporate range finders or possess wi-fi (or any other wireless capability) will not be permitted. Use of any type of range finding device will result in disqualification.

**Dress Code:** All archers must wear long pants and sturdy closed toed shoes in order to shoot. No flip flops, clogs, Crocs or similar footwear will be allowed. Long hair must be tied back. Any archer arriving at this course otherwise dressed will not be allowed to enter the course.

**Target:** Any quality 3-D target designated by the shoot management may be used in this event. The target at any given shooting station shall remain the same for the duration of the shoot.

**Coaches and Spectators:** Those spectating the 3-D match must remain in the designated areas in order to maintain an orderly flow of traffic at each shooting station. The designated area is generally along the road in a manner that does impede the flow of traffic or 20 feet behind the furthest stake from the target or the discretion of the range officers.

**Scoring:** 10 / 5 / H / M

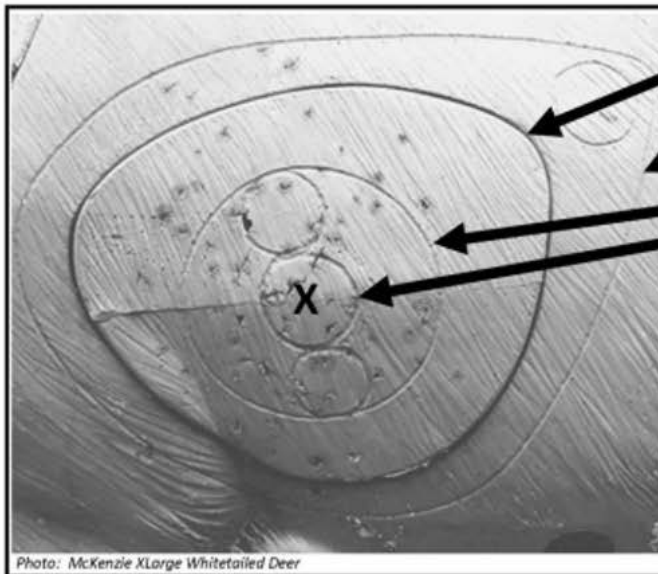


Photo: McKenzie XLarge Whitetailed Deer

### Example

- This Line represents the "Core" (foam insert) of the target and is a removable piece that does not represent a score.
- This Line represents the "Vital-Ring". It may appear inside or outside of the "Core" = 5
- The Largest ring is the "Heart Ring" = 10
- The Center small 3 rings are part of the 10 point ring.
- Any hits outside the vital ring will be scored as an "H"
- A miss, pass through, or glanced-off will be scored as an "M"

Any part of the target outside of the normal animal body is NOT considered part of the animal. This would include horns and target bases (logs, rocks, etc.). Hits to these areas are to be scored as an "M"

### Scoring and Tabulation

Each squad is responsible for recording their scores. If there is a question regarding a scored arrow, request assistance of a range officer. All scoring questions should be resolved before leaving the station in question and absolutely before turning in scorecards. Any scorecard being rendered unusable due to lack of care or archer error, personal or by other archers, will not be scored.

District 3 / 4-H & Youth Development

Texas A&M AgriLife Extension Service  
 11708 Hwy. 70 S., P.O. Box 2159, Vernon, Texas 76385-2159  
 Phone Numbers 940/552-9942 FAX 940/553-4657



## Rolling Plains District 3 4-H Archery Games

### *Agent Responsibilities / Contest Responsibilities*

**Check in:** A station will be set up for each age division  
Responsibilities at the table: **Three** Agents (or volunteers) will be assigned to each table with a qualified bow checker. One agent checking registration, another agent handing out correct scorecard and assisting with bow check. The other agent will serve as a runner/liaison to the range master, committee chair, and tabulation team.

**1 Range Master** – gives the orientation, supervises the whole course, and deals with any questions regarding major problems.

**8 – 10 Range Officers** - observes shooters for safety and any other issues, observe/assist with scoring questions and arrow retrieval; keeps a close eye on arrow retrieval in the brush; keep things moving between ends, monitors parents, etc. to stay on the road. Since it's a single contest, plan on serving as a range officer as well. We will have two or three UTV's onsite to haul drinking water as well. Be mindful of excessive time hunting lost arrows- 2 minutes max.

### Tabulation –

**Specific Agent(s) to be assigned;** duties as assigned

Those working check in will need to communicate with those in tabulation.

### Clip Boards

Extra Clipboards will be needed, Agents are asked to bring what you have available.

**Specific Agent Assignments will be made after registration closes on April 25<sup>th</sup>. All Ag and 4-H Agents should hold the date.**

**All decisions made by the committee regarding issues/incidents during the contest are final.**

## Rolling Plains District 3 4-H Archery Games

**Lunch Reservation**  
**Orders are due 4/18/25**

PLEASE COMPLETE AND MAIL WITH YOUR PAYMENT TO  
Texas A&M AgriLife Extension Service - Archer  
County PO Box 580  
Archer City, Texas 76351

MAKE CHECKS PAYABLE TO: Archer 4-H

County \_\_\_\_\_ County Extension Agent \_\_\_\_\_

NUMBER LUNCH TICKETS \_\_\_\_\_ X \$12.00 each = \$ \_\_\_\_\_ TOTAL

Lunch will consist of burgers, chips and water.  
. No Lunch Tickets will be sold day of the  
Contest. No refunds on lunch tickets ordered.

# District 3 4-H 3D Archery Contest Rules

(source: Texas 4-H Shooting Sports Project Archery Rules)

## 3. Equipment

**3.1 Eye protection** All shooters and other persons on or in the immediate vicinity of the firing line, including coaches, range officials and any spectators are strongly encouraged to wear adequate eye protection.

**a. Corrective lenses** Normal corrective lenses constructed of impact resistant materials may be used.

**b. Shooting glasses**-Specifically designed shooting glasses may be used.

**c. Sun glasses** Sun glasses may be used if desired in archery only.

**3.2 Ear protection** Ear protection is not required in archery events, but plugs or muffs may be used to block out unwanted sound if the shooter desires.

**a. NO earbuds of any type may be used.**

## 3.3 Bows

Any bow that does not violate the conventional meaning of the term in target archery may be used in 4-H archery events. Separate classes will be designated for recurve and compound events.

**a. Recurve bows** - Longbows or recurve bows of conventional design only may be used in any recurve division of archery events.

**b. Compound bows** - Compound bows of any conventional design may be used in compound bow divisions of archery events.

**c. Crossbows** - Crossbows may **not** be used in 4-H archery events.

**d. Maximum draw weight** - Unless otherwise specified, the maximum draw weight for 4-H target archery competitions is 60 pounds, nominal peak weight or listed draw weight. Bows may be subject to verification at the discretion of event management.

**e. Draw weight (Flight Shooting)** - Bows will be measured at either the shooter's draw length (recurve or longbow) or at the peak weight (compound) prior to shooting. Flight events will be

based upon the distance shot divided by the actual draw weight.

**f. Prohibition against “sky drawing”** - Archers may not draw at an angle significantly above the line of flight to the target in any 4-H event. Sky drawing is a symptom of being grossly over-bowed, a condition leading to numerous form faults and potential injury.

**g. Bowstring** - A bowstring of adequate strength and composed of appropriate materials may not include any attachment or marking that may be used as a sighting device or aid except as permitted below. It may include the following attachments or components:

**1) Servings** - Center and end-loop servings are permitted, but no serving may terminate within the shooter's vision with the bow at full draw.

**2) Nocking point indicator** - One or more nocking point indicators may be used to position the nock on the string. The nocking point indicator may be of any conventional design, including materials that may be crimped, wound or heat shrunk to the center serving.

**3) Lip or nose mark** - One additional attachment with a diameter of one centimeter or less may be applied to the string to serve as a lip or nose mark (“kisser button”).  
**4) String peep** - String peeps are permitted only in the compound aided class.

**h. Arrow rest** - An arrow rest of any conventional design with or without adjustable or moveable pressure points, arrow plates or draw check indicator may be used as long as it is not electronic and offers no additional aid in aiming.

**1) Over-draw arrow rests** - The use of an over-draw arrow shelf or rest is permitted unless specifically disallowed. Overdraws are limited to a 6 cm or 2.5 inch maximum measured from the pivot point to bearing surface of the rest.

**2) Over-draw arrow rests in 3-D and Field**- All age classes in the aided class of 3- D and field competition may use an over-draw if they have displayed competence in shooting with that equipment.

**3) Over-draw arrows rests in long-range compound target events** - Over-draws are permitted in the compound aided division of the long range target events, but they may not exceed the limits above.

**i. Stabilizers** - Stabilizers or torque compensators may be used subject to the following provisions.

**1) Contact with equipment** - The stabilizer may touch only the bow.

**2) String guide** - The stabilizer may not act as a string guide. This rule shall not prohibit the

use of a cable guide or cable guard on compound bows.

**3) Obstacles to other shooters** - The stabilizer may not present an obstacle or distraction to other shooters.

**4) Bow quiver** - A bow quiver with or without arrows may be attached to the bow in place of a stabilizer, provided it does not serve as a sighting device or contact any part of the equipment but the bow.

**j. Bowsight** - A bow sight may be attached to the bow except in divisions where sights are not permitted. **(See rule 3.4)**

**l. Cable guard** - Compound bows may use a cable guard, conventionally attached, to aid in vane clearance.

### 3.4 Sights

One bowmark, bowsight, or point of aim may be used as an aiming aid in the basic and NAA type target events, but no more than one such device may be used at any time. The sight may allow for both windage and elevation adjustment. Either pin or aperture sights may be used.

**a. Aperture sights** - The length of any aperture sight loop, barrel or cone may not exceed the minimum 3 inside diameter of the aperture and in no case may exceed 1 cm regardless of shape.

**b. Hunting sights** - Hunting sights using one to five fixed or moveable pins may be used in all events where the use of a sight is permitted. A pin guard may be in place on the hunting sights.

**c. Optical sights** - Optical sights ("scopes") may be used in the compound aided division.

**d. Sight attachments** - A mounting device to which the sight is attached may be used, including a sight extension.

**e. Levels** - Because we are a youth development organization, a leveling device may be used in the compound unaided, compound aided, and recurve divisions.

**f. Magnification** - No lens system, prism or other magnifying device may be incorporated into the sight except as provided in rule 3.4.c above.

**g. Electronic devices** - No electronic sight or projection device, including laser sights or laser pointers will be permitted on the range with the exception of visually impaired shooters who may use a laser sight with a radio or quiet guidance from a sighted individual to guide them to the target and tell them when to release.

**h. Bowmark** - A single mark on the bow may be used as an aiming device. It may be with pencil, tape or another suitable material. A bowmark may not be used in conjunction with another type or sighting device or aid.

### 3.5 Shooting accessories

**a. Shooting tab or glove** - A shooting glove, tab or other protective device may be used on the string hand provided it is smooth and provides no mechanical aids for holding or releasing the string. No shape or design criteria are specified. Several layers of material



may be used, and a separator to reduce finger pinch may be included.

**b. Bow hand** - An ordinary glove, mitten or similar item may be worn on the bow hand.

**c. Bow sling** - A bow sling may be used, and its use is strongly encouraged to promote excellent form.

**d. Arm guard** - An arm guard or stall may be used on the bow arm to prevent string slap and to hold clothing away from the string.

**e. Chest protector** - A vest or protector may be used to control clothing on the upper body.

**f. Clothing** - Shooters may wear any clothing suitable for the climatic and weather conditions.

**g. Release aids** - Release aids may be used only by compound shooters in the aided classes. Competence with the equipment must have been demonstrated before the release aid may be used. See **also Rule 3.3 f. above.**

**3.6 Arrows** Arrows consist of a shaft with a head, nock, fletching and personal identification markings. Arrows must not be any larger in diameter than 23/64" including the point.

**a. Adequate supply** - Each archer must provide an adequate number of arrows to complete the required course of fire.

**b. Individual identification** - Each archer's arrows will be marked with his or her name, initials, other insignia or cresting to permit identification.

**c. Safety** - Arrows must be sound and properly spined for the bow.

**d. AMO standards** - Arrows must meet Archery Manufacturer's Organization standard of six (6) grains per pound of peak draw weight. Arrow weight may be checked at the discretion of shoot management or upon request of any competitor.

**e. Shaft materials** - Any safe shaft material may be used. All arrows must be inspected for soundness, particularly graphite shafts.

**f. Arrow points** - Only target or field points may be used in 4-H archery events unless other point types are specifically required.

**g. Illuminated nocks** - Illuminated nocks are not allowed.

**3.8 Other equipment** Additional equipment that does not interfere with other shooters or the management of the firing line may be permitted.

**a. Quiver** - A ground quiver or one worn by the shooter or attached to the bow may be used to hold arrows and/or to act as a bow stand.

**b. Binoculars or spotting scope** - Binoculars or a spotting scope may be used to spot arrows, but no optical device containing a range finding device or reticle is permitted.

**c. Glasses** - Ordinary eye glasses, shooting glasses or sun glasses may be worn; but the glasses must not include any device or structure to aid in aiming.

**d. Range finders** - The use of range finders is specifically prohibited in 4-H archery events.

**3.81 Electronic Equipment** -There will be **NO** electronic equipment allowed on any shooting line.

**3.82** There will be **NO** electronic equipment allowed on the 3-D course, with the exception of Range Officials equipment. This includes, but is not limited to, Cell Phones, Range Finders, two-way radio communication devices, or any other devices.

**3.9 Inspection of equipment** Archery tackle to be used in a 4-H Archery event must be inspected by the judges or field captains prior to being used. In the event that equipment that has not been checked must be used, it is the shooter's responsibility to have it inspected. Failure to do so may result in disqualification.

**4.1 Safety** Maintenance of safety is the responsibility of every shooter and coach as well as the designated range officials.

**a. Inspection of equipment** - All equipment will be inspected by field officials prior to the tournament and at any time during the tournament when inspection is merited.

**b. Control of shooting** - All shooting will be under the control of range officials at all times.

**c. Safe zone of fire** - Arrows may be shot only when a safe zone of fire exists from the firing line to the ultimate impact zone of the arrow. Observing safety hazards downrange is the responsibility of each shooter as well as the range officials and coaches.

**d. Practice shooting** - No practice shooting will be permitted on the day of a shoot except as specifically permitted and in specifically identified areas.

**e. Nocking arrows** - Arrows may be nocked only after the appropriate command to fire is given.

**f. Drawing bows** - Bows may be drawn only on the firing line.

**g. Restricted firing line** - Only shooters in the flight or relay actually shooting and range officials may be present on the firing or shooting line during active firing.

**h. Target group** - Two or more shooters sharing a target butt.

**i. Tampering** - Shooters may touch or handle other shooters' equipment only if specifically authorized to do so by the other shooter or to prevent a dangerous situation or damage to the equipment.

**j. Prohibition** against "sky drawing" - Archers may not draw at an angle significantly above the line of flight to the target in any 4-H event.

**4.3 Range Officials** A minimum of two range officials will be designated to control the shooting line and maintain high standards of safety at all times. Additional officials may be appointed at the discretion of the shoot or event coordinator.

**a. Field official** - One or more field officials will be appointed with the following duties.

**1) Safety** - The field official(s) will maintain control over safety on the shooting field and its environs at all times.

**2) Inspection** - The field official or a designated official inspects each archer's equipment for conformity with the rules and safety prior to and as needed during the tournament.

**3) Rule enforcement and interpretation** - The field official is responsible for

enforcing appropriate shoot rules, resolving disputes over rule interpretation and responding to questions about interpretation of the rules.

**4) Appointment of other officials** - The field captain or field official may elect to appoint additional officials as needed to control the shooting line, assist in scoring, record scores, inspect equipment or conduct other duties related to the conduct of the shoot.

**b. Target captain** - One member of a target group may be appointed by the group as the target captain to assist in scoring. At least two members of each target group will score when shooters score their own targets. All scorers must agree before any arrow is touched or removed from the target. In the event of a disagreement, the appropriate official will be called to make a determination before any arrow is touched or removed.

**c. Scorers** - Two members of each target group may be appointed as scorers and score recorders by the target group members.

**d. Official scorer** - An official scorer may be appointed at the option of the field captain to score targets.

**e. Official recorder** - An official recorder may be appointed at the option of the field captain to record the scores for each shooter as they are scored.

**f. Additional range staff** - The field captain or event coordinator may appoint additional field staff with prescribed duties to assist in the operation and management of the archery range.

**g. Field and 3-D officials** - A minimum of one official scorer will accompany each flight of shooters on field and 3-D archery ranges, serving the functions of field captain, scorer and recorder. The event coordinator will arrange for officials and support staff as needed to conduct the event.

#### **4.4 Shooter position**

**3-D Archery** - Some part of the shooter's body must be in contact with the shooting stake throughout the course of the shot.

#### **5. Targets-**

Any quality 3-D target designated by the shoot management may be used in this event. The target at any given shooting stations shall remain the same for the duration of the shoot, but each station may use a different type of target. Each target will have a center scoring area and an outer scoring area that cannot be observed with the unaided eye at the shooting stake.

#### **6. Scoring**

**6.3 3-D Archery Events** An official scorer shall be appointed for each group of shooters on the Field and 3-D courses.

**a. Scoring** in 3-D – Twelve (12) points for an “inner center” or “X” ring shot. Ten (10) points for a hit in the inner vital area (“heart” ring). Five (5) points for a hit in the outer vital area (“outer ring”). Any other shot hitting the animal = “H” but scored a zero (0). Any shot missing the animal = “M” but scored a zero (0). Arrows that bounce out of the target, pass through the target, or miss completely will be scored a zero (0). Ethical Passes will not be allowed.

**b. Scoring lines** - The lines between scoring zones on the target are part of the higher value area.

**d. Shaft location** - The location of the shaft in the target will determine the point value of the shot. Shafts touching a higher value scoring zone will receive the higher score.

**e. Pass throughs or bounce outs** - Any shaft that does not remain in the target for any reason will be scored as a miss. Shoot management will make every effort to maintain adequate and consistent target quality throughout the shoot.

**f. Shooter position** - Shooters must remain at least six feet away from the target until all scoring is completed and the official scorer has removed the shaft from the target. Any shaft removed from the target prior to scoring will be scored a minus five in 3-D or a miss in Field.

**g. Initialing the score card** - Both the scorer and the shooter will initial the score card to affirm their agreement on the score awarded.

**7.3 3-D Archery Match** 3-D targets will be placed in natural cover and at unmarked distances from designated shooting stakes. One or more stakes may be placed for various classes and age groups of shooters at the option of the shoot management. Only one arrow will be shot from each shooting station by an archer.

**a. Barebow and NASP equipment classes**

**1) Juniors** - Juniors will shoot a total of 30 targets at unknown ranges from 5 to 20 yards or their metric equivalent.

**2) Intermediates** - Intermediates will shoot a total of 30 targets at unknown ranges from 5 to 25 yards or their metric equivalent.

**3) Seniors** - Seniors will shoot a total of 30 targets at unknown ranges from 5 to 30 yards or their metric equivalent.

**Stake Assignments:**

Junior - **Pink** (20 yd Max)

Intermediate - **Green** (25 yd Max)

Senior - **Blue** (30 yd max)

## **b. Recurve equipment class**

- 1) Juniors** - Juniors will shoot a total of 30 targets at unknown ranges from 5 to 20 yards or their metric equivalent.
- 2) Intermediates** - Intermediates will shoot a total of 30 targets at unknown ranges from 5 to 25 yards or their metric equivalent.
- 3) Seniors** - Seniors will shoot a total of 30 targets at unknown ranges from 5 to 40 yards or their metric equivalent.

### **(a) Stake Assignments**

Junior - **Pink** (20 yd Max)  
Intermediate - **Blue** (25 yd Max)  
Senior - **White**(40 yd Max)

## **c. Compound Aided and Unaided**

- 1) Juniors** - Juniors will shoot a total of 30 targets at unknown ranges from 5 to 30 yards or their metric equivalent.
- 2) Intermediates** - Intermediates will shoot a total of 30 targets at unknown ranges from 5 to 40 yards or their metric equivalent.
- 3) Seniors** - Compound Aided and Unaided will shoot a total of 30 targets at unknown ranges from 5 to 50 yards or their metric equivalent.

### **(a) Stake Assignments**

- a. Junior - **Blue**(30 yd max)
- b. Intermediate - **White**(40 yd Max)
- c. Senior- **Red** (50 yd Max)

## **8. Time Limits**

Although no posted time limits are set, shooters must make ready and shoot in an expeditious manner. Time to judge range, determine kill zone location, adjust sights and otherwise make ready must be provided; but no shooter will impose excessive delay without due cause. A maximum of 2 minutes searching time is permitted for any lost arrow.

## **9. Shooter and Coach Responsibilities**

**9.1 Coaching** No coaching is permitted on the shooting line or station in 4-H archery events. Coaches may not advise or assist their shooters once they have started to shoot in any event except between ends or at the direct instruction of the field captain.

**a. Replacement of equipment** - A coach may provide replacement or additional equipment as needed after obtaining permission from the field captain.

**b. Assistance** - Coaches may be requested by the field captain to assist a shooter with a situation on the firing line.

**c. Coach behavior** - Coaches must conduct themselves in a quiet, supportive and cooperative manner at all times.

**d. Removal of coaches** - Range staff or the 4-H Shooting Sports Coordinator may remove a coach from the vicinity of the firing line if they violate rules, distract other shooters or appear to distract their own shooters. In the event that a coach is removed, a replacement may be permitted at the discretion of the field captain. Continued disruption shall be deemed cause for disqualification.

**9.2 Cross fires** No archer will knowingly shoot at the wrong target or shoot more than the required number of arrows at his/her own target.

**a. Cross fires** – All crossfires will be counted as a miss and scored a 0.

**b. Excessive shots** - Excess arrows shot will result in deduction of the highest value arrows on the target until the appropriate number is reached and a one point penalty for each excess arrow shot.

**9.3 Dropped or misfired arrows** Arrows beyond the dropped arrow line will be considered as shot.

**9.4 Behavior and sportsmanship** The spirit of 4-H sportsmanship and appropriate behavior is expected of all participants in the 4-H shooting sports program.

**9.5 Knowledge of procedures and rules** Shooters and coaches will make an effort to understand the procedures used in each event and comply with the rules and standards of the events.

**a. Questions** - Questions are encouraged to clarify any areas of misunderstanding or ignorance.

**b. Ignorance of the rules** - Ignorance of the rules in any event does not obviate their existence.

**c. Shooter responsibility** - Shooters are responsible for knowing the rules of their event and staying within them. Learning the rules of the events is part of the educational process for shooting sports participants, but the intent is to aid shooters rather than entrap them.

**9.6 Reporting** Shooters are responsible for knowing the proper time to report to each event and for reporting at least 30 minutes prior to their shooting time or at the posted orientation time

and location.

**9.7 Behavior of participants** Safe, circumspect and respectful behavior is expected of shooters, coaches and spectators at all 4-H shooting events at all times. Disorderly or unsafe conduct has no place on the shooting range and will not be permitted.

**a. Staff discretion** - All authorized range staff carry the discretionary responsibility to enforce behavioral guidelines.

**b. Warning** - Any shooter or coach displaying disorderly, destructive or abusive conduct may be warned a maximum of one time. Serious infractions may result in disqualification on the initial instance.

**c. Penalties** - Further instances of such conduct may result in the shooter being penalized by having an appropriate reduction in their score or disqualified.

**d. Review** - Disqualifications will be reviewed by the shooting sports coordinator and a jury assembled for the purpose of determining additional sanctions, if any, to be applied.

16

**e. Purpose** - The purpose of this section is to enforce the quality of 4-H shooting sports activities.

**10.0 Equipment Classes** The following are the official bow classes for the Texas State 4-H Archery program:

•**Bare Bow (longbow or recurve)** – Bows may not be equipped with sights or sighting marks. Must not have kissers buttons, peep sights or cushion plungers. Mechanical release aids are not permitted. Bows may have weights added, but must be in compliance with USA shooting rules.

•**Recurve** – Bows may be equipped with a single sighting device, single pin, multiple pin, or hunting style sights; may not be equipped with string peeps or string marks for rear sights. Mechanical release aids are not permitted.

•**Compound Aided** – Bows may be equipped with magnified sights and stabilizers. Mechanical release aids are permitted.

•**Compound Unaided** – Bows may not be equipped with magnified sights or stabilizers. Bows may be equipped with single pin or multiple pin sights. Mechanical release aids are not permitted.

•**NASP** – Original Genesis bows (No Genesis Mini's or Genesis Pro's) with no sights or sighting marks and no stabilizers. Mechanical release aids are not permitted. **Only Easton 1820 30" arrows are allowed.**

# Site Map of Archer County Shooting Sports Complex





# 2024-2025 TEXAS 4-H YOUTH DEVELOPMENT PROGRAM

## 2024-2025 D3 Archery Contest CAMP & ENRICHMENT PROGRAM

### WAIVER, INDEMNIFICATION, AND MEDICAL TREATMENT AUTHORIZATION FORM

1. EXCULPATORY CLAUSE. In consideration for receiving permission to participate in any and all activities of Texas 4-H (“activity”), which is sponsored by Texas A&M AgriLife Extension Service and Texas 4-H Youth Development Program, (“sponsor”), a member of The Texas A&M University System, I hereby release, waive, covenant not to sue, and agree to hold harmless for any and all purposes sponsor, The Texas A&M University System, the Board of Regents for The Texas A&M University System, and their members, officers, agents, volunteers, or employees (“RELEASEES” or “INDEMNITEES”) from any and all liabilities, claims, demands, injuries (including death), or damages, including court costs and attorney’s fees and expenses, that may be sustained by me while participating in this activity, while traveling to and from the activity, or while on the premises owned, leased, or controlled by RELEASEES, **including injuries sustained as a result of the sole, joint, or concurrent negligence, gross negligence, negligence per se, statutory fault, intentional torts, or strict liability of RELEASEES.**
2. INDEMNITY CLAUSE. I am fully aware that there are inherent risks to myself and others involved with this activity, including but not limited to all events and activities, and I choose to voluntarily participate in this activity with full knowledge that the activity may be hazardous to me and my property, and to the person and property of others. I acknowledge there may be physically strenuous activities. I know of no medical reason why I should not participate. **I agree to indemnify and hold harmless INDEMNITEES** from any and all liabilities, claims, demands, injuries (including death), or damages, including court costs and attorney’s fees and expenses, which may occur to myself, other participants, and third-persons as a result of my participation and conduct in this activity, **including injuries sustained as a result of the sole, joint, or concurrent negligence, gross negligence, negligence per se, statutory fault, intentional torts, or strict liability of INDEMNITEES.**
3. COVID-19. I expressly acknowledge the health risks and dangers associated with the transmission of the COVID-19 virus, and other communicable diseases, and recognize that exposure to the COVID-19 virus, or other communicable diseases, could occur while my child is in the care of sponsor. As such, and as additional consideration for participation in the activity, I understand the waiver and indemnity provisions in paragraphs (1) and (2) above apply to the possibility of COVID-19 community spread. I certify that prior to leaving my child in the care of the sponsor that my child: (a) has not been diagnosed or is suspected to have COVID 19, (b) does not have any of the coronavirus symptoms listed on the CDC’s Symptoms of Coronavirus page, (c) has not in the past 14 days had close contact (less than six feet) with a person who has a lab-confirmed case of COVID-19, (d) has not in the past 14 days had close (less than six feet) contact with a person who is awaiting results of a COVID-19 test because of COVID-19 symptoms or exposure, or (e) in the past 14 days has not returned from international travel or traveled through an area with state or local restrictions that mandate quarantine upon arrival home. I also certify that each time I leave my child in the care of the sponsor, I have conducted a daily assessment on my child and that he/she is not exhibiting any of the above signs or symptoms of, or exposure to, COVID-19.
4. NO INSURANCE. I understand that RELEASEES do not maintain any insurance policy covering any circumstance arising from my participation in this activity or any event related to that participation. As such, I am aware that I should review my personal insurance coverage. Sponsor does not carry general liability insurance to cover claims arising from this activity so it seeks a waiver of claims as additional consideration for the right to participate so sponsor, a governmental unit of the State of Texas, can(a) provide the activity at the lowest possible cost to participants; and (b) provide access to a greater number of participants by expending limited resources on program materials rather than on liability insurance.
5. BINDS HEIRS. It is my express intent that this agreement shall bind the members of my family and spouse, if I am alive, and my heirs, assigns and personal representatives, if I am deceased, and shall be governed by the laws of the State of Texas.
6. MEDICAL AUTHORIZATION, INDEMNITY FOR MEDICAL EXPENSES, and WAIVER. I understand RELEASEES cannot be expected to control all of the risks associated with this activity and RELEASEES may need to respond to accidents and potential emergency situations. Therefore, I hereby give my consent for any medical treatment that may be required, as determined by a medical professional at the medical facility, during my participation in this activity with the understanding that the cost of any such treatment will be my responsibility. I agree to indemnify and hold harmless INDEMNITEES for any costs incurred to treat me, even if an INDEMNITEE has signed hospital documentation promising to pay for the treatment due to my inability to sign the documentation. I further agree to release, waive, covenant not to sue, and agree to hold harmless for any and all purposes, RELEASEES from any and all liabilities, claims, demands, injuries (including death), or damages, including court costs and attorney’s fees and expenses, that may be sustained by me while receiving medical care or in deciding to seek medical care, including while traveling to and from a medical care facility, **including injuries sustained as a result of the sole, joint, or concurrent negligence, negligence per se, gross negligence, statutory fault, intentional torts, or strict liability of RELEASEES.**

7. **NO STRICT RULES OF CONSTRUCTION.** In the event of a dispute over the meaning or application of this agreement, it shall be construed fairly and reasonably and neither more strongly for nor against either party.
8. **VOLUNTARY SIGNATURE.** In signing this agreement I acknowledge and represent that I have read it, understand it, and sign it voluntarily as my own free act and deed; sponsor has not made and I have not relied on any oral representations, statements, or inducements apart from the terms contained in this agreement. I execute this document for full, adequate and complete consideration fully intending to be bound by the same, now and in the future. **For youth engaging in extracurricular activities:** I understand I can choose not to sign this document and free myself from its terms and the associated risks of the activity by simply not participating in the activity and choosing some other activity available to me that has a lower level of risk to me. I further understand this is a voluntary, extracurricular activity.

**SIGNING THIS DOCUMENT INVOLVES THE WAIVER OF VALUABLE LEGAL RIGHTS.  
CONSULT YOUR ATTORNEY BEFORE SIGNING THIS DOCUMENT.**

**In case of emergency, contact:** \_\_\_\_\_

**At the following number:** \_\_\_\_\_

**If the participant has medical insurance, please indicate:** \_\_\_\_\_

**Insurance Company:** \_\_\_\_\_ **Policy Number:** \_\_\_\_\_

**Name of Primary Policy Holder:** \_\_\_\_\_

**Please list any special service your child may require:** \_\_\_\_\_

\_\_\_\_\_  
\_\_\_\_\_

SIGNED this \_\_\_\_\_ day of \_\_\_\_\_, 20\_\_\_\_

Participant Signature: \_\_\_\_\_

Printed Name: \_\_\_\_\_

Participant's Date of Birth: \_\_\_\_\_

Parent or Legal Guardian Signature:  
(If participant is under 18 years old) \_\_\_\_\_

Parent or Legal Guardian Printed Name:  
(If participant is under 18 years old) \_\_\_\_\_